

STONE-COLD FLAMES

NoUVIR fiber optics make the most realistic, breathtaking flames that you have ever seen. You can demonstrate all the old forms of lighting in safety with no UV and no heat. Retrofit actual lamps so they aren't dead. Make amazing replicas. Buy flames or buy whole custom fixtures.

FEATURES:

- Handshaped individual acrylic flames
- Candle, gasolier round, gas batwing, gas mantle, oil/lard, kerosene flat wick and various light bulbs
- 3 candlepower output per flame
- Ability to add random "flicker" or slight color shifts with a color wheel added to the projector

FLAME ONLY: Single flame components are sold to carefully convert historic lamps or to build realistic replicas.

CUSTOM ORDER CANDLES: Full candles in a variety of diameters, heights, wax dribbles (burn rates) and colors of wax from parlor white to servant tan. Specify if the candle is drilled through the side for mounting in a solid stick or from the bottom for the fiber to come through the cup. Candles are provided with 1mm fiber and a DIMMER-SPLICE connector. Contact us for details and pricing.

CUSTOM ORDER LAMPS: From a 200 AD Biblical oil lamp to a 1890's ship light, NoUVIR has made different types of lamps for different periods and uses. Light parlors, dining tables, ballrooms, school rooms, mines, church alters, bars, military encampments, stables, tents...matching the time period, location and use. Transport visitors back in time.

Unlit is unused, and in reality unappealing. An unlit candle just sits there, unused, uninteresting, unloved. An unlit historic light fixture looks dead.

Light does not just define spaces, but can speak volumes about a generation and a lifestyle. A brass Colonial, handheld candlestick states a different time period than a brass wall sconce in an 1850's church. A kerosene lamp with hanging crystals makes a different statement than a cast iron lamp from the same 1890's period.

Historic lighting no longer has to be dark and dead. You can use it to tell history's story. NoUVIR flames breathe life into an exhibit or room. Re-ignite your visitor's imagination with NoUVIR.



STONE-COLD FLAMES HISTORIC LUMINAIRES

FIBER OPTIC FLAMES FOR HISTORIC FIXTURES. CALL FOR DETAILS.

HCDL • CANDLE FLAME ONLY LUMINAIRE

HISTORIC CANDLE FLAME

The HCDL is an individually hand-shaped candle flame powered by one 3mm or up to seven 1mm optic fibers with a brightness of about 3 candlepower. Because NoUVIR luminaires are easily concealed, it's possible to light historic rooms in such a way that only the appropriate period lighting is apparent. The supplemental lighting disappears or appears to be from historic sources. Call for pricing. Flames are usually supplied with seven 1mm fibers in DMSP DIMMER-SPLICE Connector ready to attach to a 3mm fiber.

FCDL • STONE-COLD FLAME CANDLE

FULL CANDLE WITH FLAME AND SPLICE CUSTOM TO ORDER

Order a FCDL as a complete candle of any size or shape. The candle can be made out of parafin, bee's wax or white acrylic, in several wax colors, with or without natural looking drips. Fitted with an HCDL flame, it is drilled so fiber can be directed out the bottom; or it is cut with a small slot in the back so the fiber can be directed out the back where it does not have to go through the cup of the candlestick. Candlesticks or fixtures are another option.

Colonial period artifact with a NoUVIR bee's wax candle

Historics



Historic lighting can be used three very different ways. The most common is to set a time period or a mood. The flames replicate the lighting of a specific date. Doing so makes such incredible rooms that non-museum architects have transferred NoUVIR historic into romantic dining areas, game rooms, fine wine cellars, fancy entries and even a complete grotto pool house as seen below.

Historics flames are also a way to make actual historic lamps look alive. Fiber is inert. It slips into and through tiny holes. It can be safely tied to structures. The projector is located away from the lamp, so changing a light bulb is not a hazard to the artifact. Often the projector has contributed only a few fibers to the historic lighting. So the rest of the 32 fiber projector capacity can be working with hidden luminaires to light things in the room or light cases with artifacts.



Candles all gently flicker.
Lanterns burn steady.

STONE-COLD FLAMES ~~HISTORIC~~ LUMINAIRES

FIBER OPTIC FLAMES FOR HISTORIC FIXTURES. CALL FOR DETAILS.

HBOL • OIL FLAME ONLY LUMINAIRE

HISTORIC BIBLICAL OIL LAMP FLAME

The HBOL is hand-shaped, patterned to match the flame of a fluid oil lamp. The flame is bigger at the base and shorter than a candle flame as oil lamps usually have larger round wicks. Powered by seven 1mm fibers, it is about 1-1/2 candlepower. (The smaller fibers are easier to run through a historic lamp, so most flames are ordered to include a bundle of seven 1mm fibers with a DMSP DIMMER-SPLICE Connector. Specify what options you desire.)



Replica lard lamp known as a "Betty"

FBOL • CUSTOM OIL LAMPS

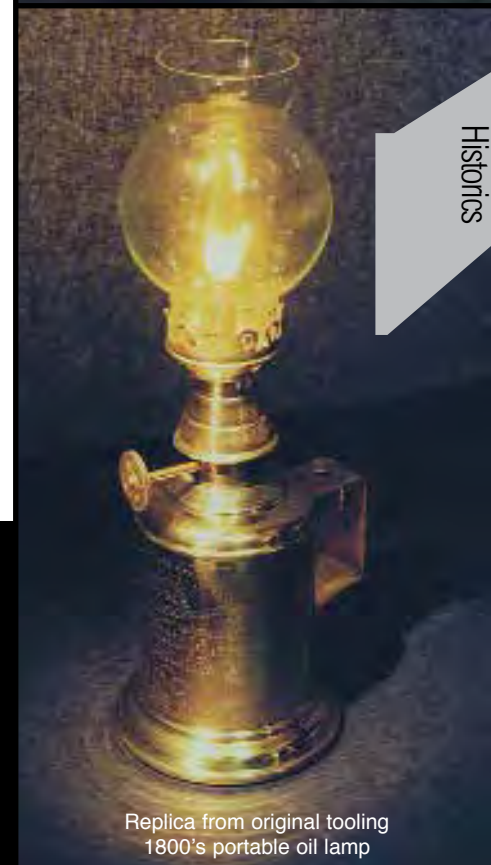
COMPLETE HISTORIC BIBLICAL OIL LAMPS

The FBOL is an order code for any number of lamps using a round-wick flame. We replicate vintner lamps, lanterns, lard lamps, olive oil lamps, genuine Biblical lamps with Christian symbols (to light Bibles), Byzantine oil lamps, commercial lamps, Federalist chandeliers, round wick whale oil lamps, miner lamps and ship lanterns. Specify fiber and connector. Call

Thirdly historic lamps are used to draw attention to a key artifact. A lit Biblical olive oil lamp inside a case is a curiosity. No visitor will miss the artifacts surrounding it. Any case with a lit candle is an automatic draw. No one misses the Shakespeare document lit by a candle in a period candlestick.

A Civil War setting with a camp lantern on a table will cause every visitor to read what's on the table. A hanging lantern in a cargo hold makes sure people look in the hold. A Victorian parlor lit in gaslight draws attention to the fireplace and the ceiling details. A desk lit with a kerosene lantern is the piece of furniture in the room everyone sees. Historic lamps are well worth the extra research and effort. Call NoUVIR for help.

100 AD original lamp



Replica from original tooling
1800's portable oil lamp

Historics

ZSBA spots are hidden in

The 12' waterfall is the exit to an outdoor infinity pool.

Water from crack splashing lantern is absolutely safe.

STONE-COLD FLAMES HISTORIC LUMINAIRES

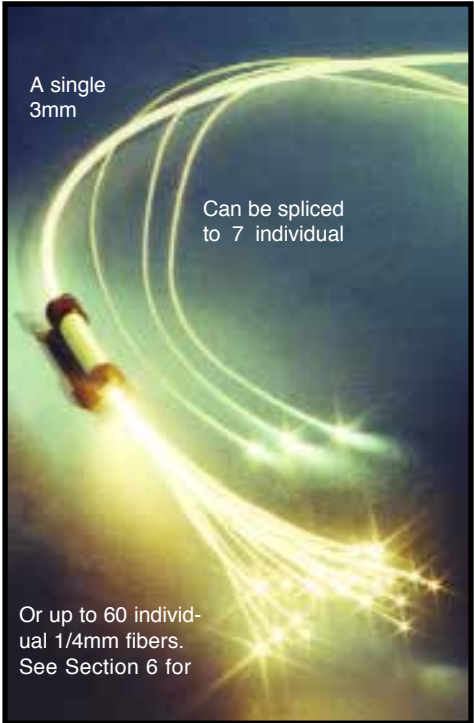
FIBER OPTIC FLAMES FOR HISTORIC FIXTURES. CALL FOR DETAILS.

**HKRL • KEROSENE FLAME ONLY LUMINAIRE
HISTORIC KEROSENE LUMINAIRE**

The HKRL is a hand-shaped, acrylic flame, patterned to match the flame of a flat-wick kerosene lamp. The HKRL can be powered by multiple 3mm fibers (up to five). This flame comes alone, installed in a brass replica kerosene burner or fitted into a historic lamp. The chimney and the base of the lamp are not included. (For complete lamps order FKRL.) The HKRL usually requires a 1/8" hole somewhere in the front or base of the lamp to route fiber, but we have routed through existing airvents in burners. (There are so many options and variations from replicas to retrofitting your historic lamps that you will want to talk to an expert. Contact NoUVIR for information.)

**FKRL • COMPLETE
KEROSENE LAMP
A LARGE VARIETY OF COMPLETE
FULL HISTORIC KEROSENE LAMPS**

The FKRL is the order code for any type of kerosene lamp. They come in an endless variety of choices. Most are custom designed and individually created for the time period being represented. Call NoUVIR to find the perfect lamp to match your needs. A single historic lamp can change your museum.



Use a DMSP DIMMER-SPLICE Connector to attach one 3mm fiber running from the projector to six or seven 1mm fibers to power the flame. Add a colorwheel for flicker. Å

NoUVIR kerosene lamps are so realistic your guests will look for soot on the chimney.



STONE-COLD FLAMES HISTORIC LUMINAIRES
 FIBER OPTIC FLAMES FOR HISTORIC FIXTURES. CALL FOR DETAILS.

HGSL • GASLIGHT FLAME ONLY LUMINAIRE
HISTORIC GAS FLAME

The HGSL is an individually hand-shaped flame which simulates the intensity and color of an open flame gaslight. Powered by one 3mm (1/8") fiber or up to seven individual 1mm fibers, the HGSL can be mounted in nearly any gaslight fixture for soft, even, incredibly realistic illumination. Choose either a round flame like that formed by a circular nipple or a batwing flame formed by most spreaders. Custom flames have also been made to match other gas tips. (Specify if you want fiber and a connector.)



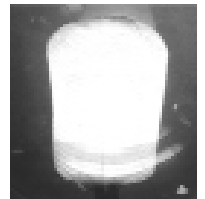
Round Gas Flame

FGSL • COMPLETE GASLIGHT
FULL HISTORIC GAS LUMINAIRE CUSTOM TO ORDER

A variety of single arm gaslights or gas chandeliers are made to order to match any time period. A gas company employee working on historic fireplaces commented, "Wow. I've never seen our gas used for lights before!" The room was lit by NoUVIR fiber optics.

HMTL • MANTLE FLAME ONLY LUMINAIRE
HISTORIC GAS MANTLE LUMINAIRE

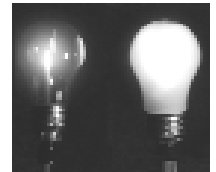
The HMTL is a flame over which is stretched an replica cloth mantle. The light coming through the translucent mantle causes the mantle itself to glow and makes the pattern of the fabric in the mantle visible on close inspection. Very realistic.



Order **HMTL**

HLBL • LIGHT BULB ONLY LUMINAIRE
HISTORIC LIGHT BULB LUMINAIRE

Pick from a variety of actual light bulbs from Edison recreations to marquee lights in which NoUVIR has carefully removed the filament and replaced it with optic fiber. An HLBL closely replicates a light bulb duplicating architectural lighting or old exhibits, but with no



Order **HLBL**

Let NoUVIR custom design gaslights and other historics to make a room come alive with history. Call for design help.



Gas Batwing Flame





How do you show the difference in the year between two Victorian parlors in the same Civil War exhibit?

One way is to use the lighting. The wall sconce on the left is 1850. The hand-blown chimney is plain with a wide-mouthed, fine etched bowl held in a ring. The oil font is glass with hand-painted, pink flowers matching the tear drops. The font cup is cast with the hanging glass tears popular at the time.

The sconce on the right is 1880's. The chimney is molded and held by brass fingers. The font is ornate brass in a stamped ring with a matching, scrolled wall bracket. The sparkle is from different colored hanging cut crystals.

The historic lighting shows how quickly the war shifted what was made and what was used. Historic lamps helped the museum tell their story.



FLBL • COMPLETE LIGHT FIXTURE WITH LIGHT BULB(S)

FULL HISTORIC LIGHT BULB LUMINAIRE

From replica Tiffany lamps to simulated marques with a name in lights, NoUVIR can build historic fixtures that originally used damaging light bulbs. Contact NoUVIR for all this type of custom work.



Light redefines this rare whale oil lamp from circa 1830. No holes or modifications were made as fiber was simply slipped through air openings and loosely tied behind the arms where it was hidden from sight. The flame itself sits on the original burner. If you look into the lamp chimneys, you can see the fiber optic Argand flame with its yellow hue.

Before NoUVIR, daylight lit the lamp and the room. Now the shutters remain closed and the artifacts remain safe. Light spills onto the table and the font. But unlike 200 years ago there is no heat to melt the whale oil. Instead this light is stone cold and absolutely safe.